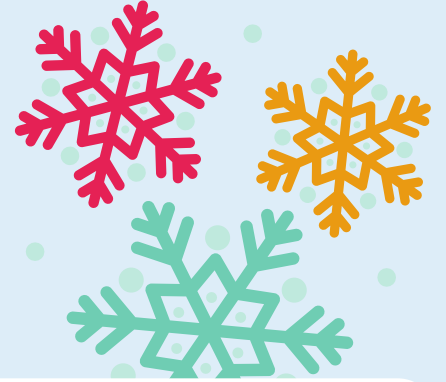




Friday 2nd December 2022



Christmas Party Dates

Just a reminder that children will be involved in Christmas parties/treats during the last week of term and the dates are as follows. The children are allowed to dress in 'party clothes' on the day of their party.

| | |
|-------------|------------------------|
| Early Years | Wed 14th December AM |
| KS1 | Wed 14th December PM |
| Years 5 & 6 | Thurs 15th December PM |
| Years 3 & 4 | Fri 16th December PM |

Staff Training Day

On the 25th November, the teaching staff had a very informative training day, hosted by Meltham CE. The focus of the day was on how schools can promote self-esteem and resilience in our children. The training was delivered by Northorpe Hall and attended by all primary schools in the Honley Partnership. This training was very relevant to us, as mental health and wellbeing is a school development priority for this year. Lots of useful ideas and strategies were taken away to implement for the children. These support the work we are completing with Northorpe Hall this year, including the staff training and parent workshops that have recently taken place. We are now looking forward to our next training day in January with the Together Learning Trust primaries where we will be focussing on greater depth writing.



Christmas Jumper Day

We have now decided to hold our Christmas Jumper day on Friday 9th December instead of Thursday 8th (the official Save the Children Christmas Jumper Day). We are inviting all children to take part in this day for a donation towards this worthy cause. There's no need to buy a Christmas jumper—just turn old jumpers into sparkly new creations! Thank you!



Year 1 & 5's Visit to St Bartholomew's Church

On Tuesday 29th November, Years 1 and 5 walked together to St. Bart's, the large church in the centre of Meltham. Once there, they were able to explore the church and learn the meaning of new associated language such as pew, font, pulpit, Pascale candle, alter, nave and chalice. The older children spent time identifying different areas of the church, discussing Christian ceremonies which are held in the building and reflected upon how it felt to be inside the church.



Kind members of the congregation served the children with juice and biscuits. Rev. John Dracup was on hand to answer any questions and closed our visit with a prayer of thanks for all the positive and caring people in our lives. We hope to welcome Rev. John into our school sometime very soon.



THANK YOU

Thank you!

'A huge shout-out and enormous thanks to the 'Moorhouses'. Three generations of this fabulous family have been working away in our woodland over the last month. Cutting away brambles, redefining paths, sourcing and adding wood chippings and generally giving our outdoor classroom some much needed TLC. It has allowed our forest school sessions to really flourish and made space for a host of Elves who seem to have moved in for the Christmas period!

Also, a big 'thank you' to all who helped at the PTA leaf sweep a couple of weekends ago. We really appreciated that families had given up part of their weekend to help make our school grounds look so much better!

If anyone else feels they have a bit of time (large or small amounts, both are very valuable) to support the upkeep and development of our grounds, please get in touch with the office - there is always a bed which needs weeding, a pot that needs planting or a woodland that needs re-wilding!

Carols in the Park

On Sunday 4th December it is the annual 'Candlelight Carols in the Park' event which takes place at the Robert Ashton Memorial Park at 4.00pm. Meltham and Meltham Mills Band will be playing the carols – admission is free and remember to bring a torch!

Our choir have been learning 'It was on a Starry Night' to sing with other local schools. All of our children are invited to join them and it would be great to see lots of our families at the event. Please note that parents/carers will be responsible for their children throughout the event.



Communication

We value the relationship we have with our parents and carers and are always grateful for the support they give to school, and the contributions you make to the children's learning. We pride ourselves on having good levels of communication with our school community and this is carried out in a variety of ways:

- Our school website is a useful source of information where you will find key policies, important dates, information about the school day, our curriculum and so much more
- Our Facebook page is now being more regularly used and provides a nice window to our school to see the lovely learning taking place in and out of school.
- Our Twitter account provides a similar outlook to Facebook and can be found at @MelthamMoor
- Class Dojo is used extensively to communicate whole school and class level information as well as showcasing learning, and having a useful messaging system.
- The school texting system is used in emergencies such as school closures.
- You can contact the school office at office@melthammoor.org
- Finally, of course, you can talk to us. Mrs Woodfield is always available on the school playground to chat before school in a morning and is happy to meet with parents at a mutually convenient time if a discussion requires more time or privacy. Class teachers are also happy to meet with parents for after school appointments.





Christmas Concerts

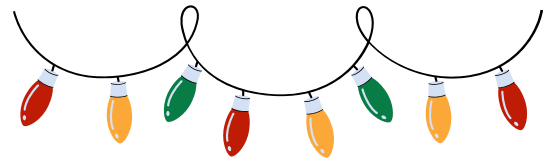
We are very excited to be returning to our usual Christmas concerts next week after two years of disruption. The children are very excited to be performing and I am sure will make us all very proud. Just a few logistics for next week: Please can the children arrive back at school at 6pm (and no earlier as staff will not be ready) and enter through the main entrance. The audience will be able to come in and be seated from this point. Throughout the performances, can we ask that there is no photography as this is distracting for the children and we have children in school who are not permitted to be photographed. Class teachers will take pictures of each child in their costume and send these to you via Dojo. DVDs are also available to purchase (please complete an order form and send it to the school office, with cash, by Monday 12th December. Please can we ask that mobile phones are switched off. Also, please bear in mind our local residents and park considerately. The children will be released safely to parents after the performance. Please can KS2 parents/carers who are not watching arrive to collect children at 7.30pm as we estimate that this is when we will be finishing. KS1 parents to collect at the earlier time of 7.15. Finally, can we ask that all children attend the evening performances (especially Year 5) as the shows are very much a team effort and so we don't want to dilute the impact.

A reminder of the performance dates and times:-

Nursery/Reception Monday 12th December at 10.00am

KS1 Concert Wednesday 7th December at 6.30pm
Thursday 8th December at 10.00am

KS2 Concerts Tuesday 6th December at 6.30pm
Thursday 8th December 1.30 pm (community performance - tickets not required but let the office know if you would like to come)
Thursday 8th December at 6.30pm



Dates for your diary

Sun 4th Dec
Carols in the
Park

Fri 9th Dec
Christmas
Jumper Day

Wed 14th Dec
School Christmas
Lunch

Fri 16th Dec
Break up
for Christmas!

Christmas Hampers

Just a reminder that donations for the PTA Christmas Hampers are still welcome until Friday 9th December. Donations can be any food, drink or festive treats (nothing requiring refrigeration please) and can be sent in with your child or brought into the office. Tickets are on sale from the school office until Monday 12th December.

Christmas Cards

The children are able to bring Christmas cards from next week, which they need to post in the box in the entrance hall. Some of the older children will deliver them to classes at the end of the day.

