



MELTHAM MOOR  
PRIMARY SCHOOL

# NEWSLETTER

Friday 13th January 2023



## Happy New Year!

We hope that you had an enjoyable and exciting Christmas and New Year and on behalf of everyone at school, I would like to wish you a very Happy New Year! I hope you are healthy and well, and that you managed to enjoy a nice rest with your families over the Christmas period.

### Training Day

On Tuesday 3rd January, our teaching staff enjoyed a productive and informative training day with our partner primary schools from the Together Learning Trust. This was delivered remotely by literacy consultant, Philip Webb, with a focus on improving standards of writing through a five-staged approach, writing for a purpose and the use of quality texts. This new learning supports work already taking place in school, providing useful teaching strategies to take this to the next level. Further school development work is planned around this, which will include other opportunities for collaboration with our partner schools.

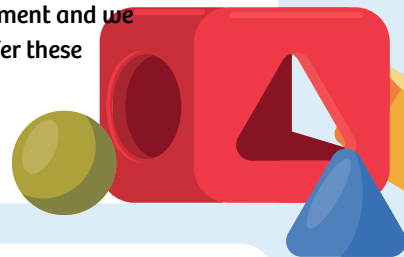
### Nursery Places

If you know of anyone who has a child who turns 3 before September, please let them know we are currently accepting applications for Nursery places for the next academic year. In partnership with Moor Fun Preschool, we are able to offer full time, flexible places from 7.30am until 6.00pm.

The application form can be completed online using the link below.

<https://www.melthammoor.org/apply-nursery>

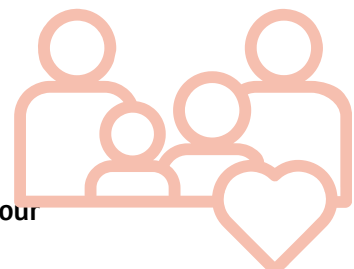
We are sometimes able to offer free places earlier than the usual free entitlement and we work through a waiting list to offer these places.

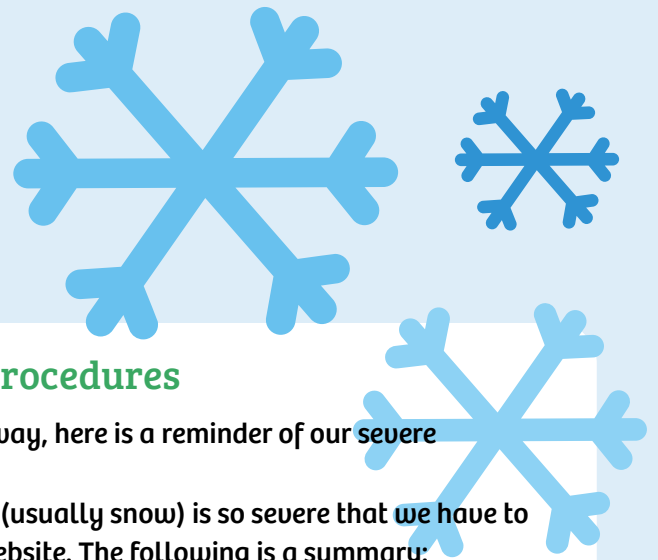


### Family Links

Our school is hosting a Family Links course for parents and carers starting next Wednesday the 18th at 9.00am. If you are interested in joining, there is still time. Please contact the school office so that we know you are coming. The course is run by Kirklees Parenting Team and comes highly recommended by parents and carers who have previously completed it. The course covers:

- Raising children's self-esteem
- Developing communication and social skills
- Teaching positive ways to resolve conflict
- Providing effective strategies to encourage co-operative responsible behaviour
- Managing challenging behaviour in children
- It also offers insights into the influence of feelings on behaviour and encourages adults to take time to look after themselves.





## Severe Weather Procedures

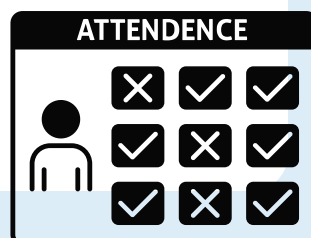
As we have a forecast of some colder weather coming our way, here is a reminder of our severe weather procedures:

We have clear procedures for situations where the weather (usually snow) is so severe that we have to consider closing school; these are outlined on our school website. The following is a summary: The decision as to whether the school is to be closed or not is made as early as we can (around 7am). Once the decision is made, all parents/carers who have up-to-date mobile numbers on our school database will receive a text message notifying them of the decision. The information will also be posted on our school website, our Twitter account and Kirklees website. information will also be broadcast on Radio Leeds. If disruption from severe weather starts during the school day, school will remain open until 3:15pm. Parents may collect their children early, or arrange for them to be collected. If someone else is collecting your child you must ring and let us know unless they regularly pick up. If heavy snow is falling, all after-school clubs will also be cancelled. If a decision is made to close school at the beginning of the day then Moor Fun will also be closed. if children have already arrived at the club then Moor Fun staff will contact parents and advise them to collect their child. If heavy snow occurs at the end of the school day, the staff at Moor Fun will contact parents to advise them to collect their child as soon as possible.

If you have any queries or need to update your contact information, please contact school by telephone, email us on [office@melthammoor.org](mailto:office@melthammoor.org) or call in.

## Holiday Requests

Good attendance (above 96%) is essential if children are to make good progress in their learning. The Honley/Meltham Partnership of schools (including local primaries and Honley High School) have a shared Attendance Policy. There is no 'right' to time off school and Headteachers' may not grant any leave of absence except in exceptional circumstances, which must be outlined in an application to school (forms can be found in the school reception area). The policy is in line with Department of Education Policy. Absences will be treated as unauthorised and parents may be given a Penalty Notice in line with Kirklees Code of Conduct.



## Reading Volunteers

We have a small number of very dedicated reading volunteers who do a fabulous job of listening to the children read - something class teachers have difficulty finding time to do. Reading is the cornerstone to all other learning and can bring huge enjoyment to the children. It is vital that all children leave us as fluent, confident readers. If this is something that you feel you can help with, even if it's just a couple of hours a week, we would be very grateful. You will need a DBS which is free and easy to complete. Please contact the school office if you are interested or would like more information.

# HELP!



**MELTHAM MOOR  
PRIMARY SCHOOL**

# NEWSLETTER

Friday 13th January 2023



## Important Absence Procedure

A reminder of our system for managing pupil absence: We ask parents to telephone or email before 9.00am to let us know when children are absent. When children are not in school and we have not had any message or contact from a parent, our policy is to telephone the contact numbers before 9.30am or as soon as possible. We will then send a text requesting contact to be made. If we have not received communication from parents by 10.00am a home visit will be made. If this is unsuccessful, we then may log a "Safe and Well" call to the Police, in line with Kirklees safeguarding procedures. We hope this will help to reassure parents about children's safe arrival and also aid our absence management. One important element is for parents/carers to ensure we have up-to-date contact numbers. Please send these in if they have changed recently as they are also vital for emergency contact.

PLEASE ALSO NOTE:-

IF A CHILD IS ABSENT FROM SCHOOL FOR MORE THAN ONE DAY, WE ASK PARENTS/CARERS TO PHONE/E-MAIL THE OFFICE ON EVERY DAY OF THEIR ABSENCE.

## Support during the Cost of Living Crisis

Just a reminder that Kirklees have a website dedicated to supporting families in these difficult financial times. The website offers support and advice. If you are struggling and need immediate support, you can apply for a Local Welfare Provision Grant. Information can be found using the following link. [Financial support and debt advice | Kirklees Council](#)

A number of our families recently signed up to receive winter clothing and/or school uniform such as:

- Warm winter coats, plus hats, gloves and scarves
- New underwear items, including tights, socks, pants and vests
- Wellies
- Big fluffy hoodie, fluffy 'uddie' or similar
- School uniform (polo shirt, school jumpers/cardigans, trousers, trainers, school shoes etc)



This service is available to ANY child who needs it. If you require any of these items then please contact Mrs Woodfield, Miss Manuel or the school office.

## Dates for your diary

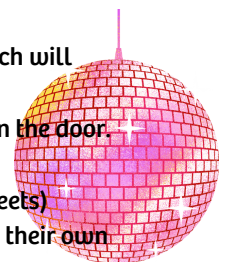
Thurs 26th Jan  
Year 4 trip  
Manchester  
Science Museum

Thurs 9th Feb  
PTA  
School Disco

## School Disco

Our PTA have now arranged the next school disco which will take place on Thursday 9th February!  
This is a non-ticket event and payment will be made on the door.

Early Years/KS1 - 4.45 to 6.00 pm - £2.50 (includes sweets)  
KS2 - 6.15 to 7.45 pm - £2.00 (plus some change to buy their own sweets)



## PTA Meeting

The next PTA meeting will be held on Tuesday 17th January at 3.30 pm. Please come along if you would like to get involved. The PTA are always looking for extra members!