



MELTHAM MOOR
PRIMARY SCHOOL

NEWSLETTER

Friday 13th October 2023

hello
OCTOBER

School Improvement Priorities

Following our self-evaluation process, the following school development priorities have been identified for this year:

- To further ensure that all pupils' work across the curriculum is consistently of a high quality, with an emphasis on writing.
- To ensure an inclusive and ambitious curriculum through adaptations, and differentiated where necessary.
- To improve mental recall multiplication tables.
- To ensure that pupils behave consistently well, demonstrating high levels of self-control and consistently positive attitudes to their education and each other.
- To further develop pupil leadership opportunities through school.
- To improve parents' engagement with school and their children's learning through the development of a 'parent pathway' offer at Meltham Moor.
- To further improve literacy in Early Years, implementing further strategies from the Philip Webb writing project.

Together Learning Trust Collaboration

Together
Learning Trust



From time to time, I like to provide an update on our working partnership with the other schools in the Together Learning Trust. As usual, there is a lot taking place in the background, as well as some exciting things planned for the coming weeks.

- A joint film project has been planned with the other primaries to create our very own film about anti-bullying, 'Make a Noise About Bullying!' to mark and share during Anti-Bullying Week. This will be a great opportunity for pupils from the schools to get together and share their ideas about this very important topic.
- In November, teachers are receiving joint training around understanding and managing challenging behaviour.
- I have also spent time in each primary school reviewing our joint development priority in improving writing so that we can share what is working well with each school.
- I am pleased to say that there will be some much needed improvements to the Year 6 toilets and corridor (hopefully at half-term) and there are some big plans afoot for a programme of refurbishment to the KS2 classrooms next summer, if not before. I will keep you updated!

Curriculum Information

Just a reminder that you will find information regarding what your child will be learning this year under the Curriculum section of our website. This also includes information about Early Years and our unique school offer of 'More at Meltham Moor'. This can be found using the following link:

[Curriculum — Meltham Moor Primary School](#)





Friday 13th October 2023

Progress Evening

You should have received a letter recently regarding the first Progress Evening of the school year which will take place on Thursday 26th October between 3.30 pm to 7.30 pm. This is your formal opportunity to discuss your child's progress, including strengths, areas to target for improvement and general progress. I would hope that all (excluding ANP/EHCP) parents attend the Progress Evening and show their commitment to their child's learning and development. Parents living in separate households are asked to attend the same meeting. Parents who have had individual meetings with teachers recently do not need to have an additional meeting on the 26th.

Please ensure that slips indicating the appointment time you would like are returned as soon as possible. Appointment times will then be sent out on Friday 20th October.



Harvest Festival

On Wednesday we celebrated Harvest with a whole school assembly of thanks. To the delight of staff and pupils our Nursery children opened the celebrations and danced to the traditional rhyme 'Dingle Dangle Scarecrow'. Children from both Key stages 1 & 2 acted in a short play, written especially for the occasion, which reminded us about the inequalities in our world and the importance of sharing the harvest. Everyone joined in with our harvest songs of praise and the assembly closed with a fabulous rendition of 'Chicka Hanka Step Back' which is a very complicated four part song with vocal percussion and two contrasting melodies. A very generous collection of dried and tinned foods, donated by our school families, was on display throughout the assembly and this has now been taken as a donation to the Meltham Food Bank.

Christmas Concert Dates

The term is quickly passing by and we are beginning to think about our plans for Christmas! As usual, Early Years, KS1 and KS2 will be performing separate nativities and performances. This will be a fabulous opportunity for the children to showcase their talents and wow you with their acting, singing and dancing. The dates are as follows:

Tuesday 12th December:	KS2 - afternoon performance at 1.30 pm evening performance at 6.00pm
Wednesday 13th December:	KS1 - evening performance at 6.00pm
Thursday 14th December:	KS1 - morning performance at 9.30am
Monday 18th December:	Nursery and Reception at 10.00am

Further information about the performances and tickets etc will be sent out shortly.





**MELTHAM MOOR
PRIMARY SCHOOL**

NEWSLETTER

Friday 13th October 2023



Sports Activities

On Monday evening, a team of year 3 and 4 boys attended a Futsal Competition at Honley High School. The team played amazingly well - finishing up unbeaten : 2 wins and 2 draws! This left them joint 1st on points with just 1 goal between them and the winners.

Well done to Bobby, Gareth, Roman, Zac, Alfie, Kamai, Harry, Harris and Alexander!

Last week we had a group of brave and confident runners taking part in the cross country event at Neiley fields. Thanks to everyone who turned up to represent school. Particularly big congratulations to Harley and Holly in Y5 who have both qualified for the next round - the Pennine Sports Partnership finals - in a couple of weeks' time.

Parent Survey

Thank you to everyone who completed our Parent Survey last term. The results of this were overwhelmingly positive. A summary of the survey will be published on the school website. We continuously reflect and look for ways in which we can improve, and welcome feedback at any point of the year. There are always comment slips available outside the school office. We also value any positive feedback you can give: thank you for the kind comments made at our recent Open Afternoon. Staff really enjoyed reading these and so we have displayed them in the school hall!



Reception Autumn Walk

Our Reception class had a very exciting week as they went on their Autumn walk around the local community. They loved looking for all the signs of Autumn, such as the changing colour of the leaves and finding acorns on the floor.

All the children were extremely well behaved and demonstrated all of our Meltham Moor school values whilst they were out. They can't wait to continue their learning about Autumn and the changes that can be seen both at home and in school.





**MELTHAM MOOR
PRIMARY SCHOOL**

NEWSLETTER

Friday 13th October 2023

Mental health matters

Following World Mental Health Day on Tuesday this week, please see some useful links below:-

- <https://www.kirklees.gov.uk/beta/mental-health/index.aspx>
- <https://parentingsmart.place2be.org.uk/>
- <https://parentingsmart.place2be.org.uk/article/healthy-habits-for-parenting>
- [https://www.annafreud.org/parents\[1\]and-carers/](https://www.annafreud.org/parents[1]and-carers/)
- [https://www.northorpehall.co.uk/parents\[1\]workshops-learn-about-mental-health](https://www.northorpehall.co.uk/parents[1]workshops-learn-about-mental-health)

Nursery and Reception

Our new Nursery and Reception children have made a great start to the term and have settled very well. A reminder to all parents that children must be registered for a Reception place through the local authority by 15th January 2024 for a place in September 2024. If you are unsure as to the procedure or whether your child is registered for Nursery or Reception, please contact the office. If you would like a tour of the school, please also contact the school office.

Punctuality Matters

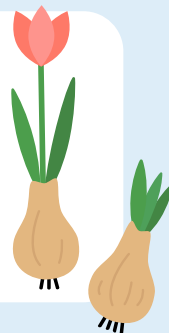
Unfortunately, there have been a significant number of children late through the school office since the start of term. Arriving at school in good time at the start of the day (8.55 am) is a vital part of children's learning and is a positive start to the day. On most days the children will immediately begin learning activities and those who are regularly late are missing out on this experience. If you are experiencing difficulties getting your child into school on time, please do not hesitate to contact school to discuss ways in which we may be able to help.

PLEASE NOTE: In an attempt to improve punctuality, we are now asking parents/carers to complete a Lateness Log (located in the school office) stating the reason for lateness. Therefore, could you please ensure that you accompany your child into school when he/she is late.



Please can you help?

Our lovely PTA are going to be doing some planting in the Peace Garden soon. If anyone has any spare spring bulbs that they would like to donate, this would be greatly appreciated! Many thanks



Important Reminders

- If your address, contact details etc change at any time, please ensure that the office staff are informed so that school records can be amended accordingly.
- Ensure that school are notified of medical conditions or changes in medical conditions.

Diary Dates

- Wed 18th to 20th Oct - Cliffe House Residential - Year 6
- Tues 24th Oct - Flu Vaccinations (book on-line)
- Thurs 26th Oct - Yr5 Trip - Organ Extravaganza
- Thurs 26th Oct - Progress Evening/Parents' Evening
- Wed 22nd Nov - Teachers' Open Door Meeting (parents/carers can pop in to see the class teacher between 3.15 and 4.15 pm)
- Thurs 23rd Nov - School Disco
- Fri 24th Nov - Inset Day